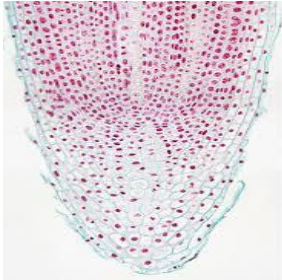
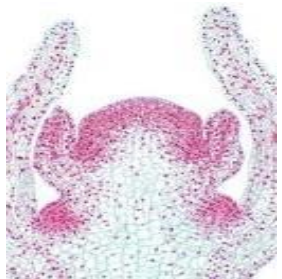
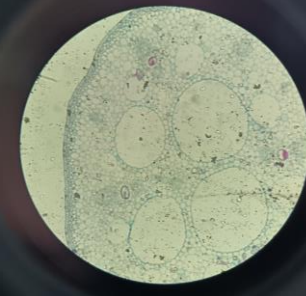
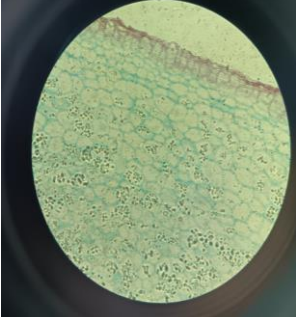
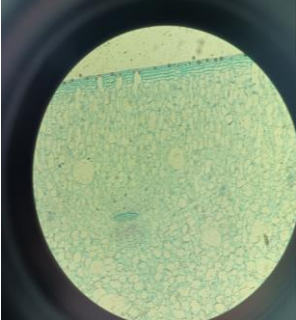
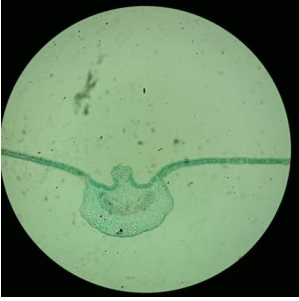
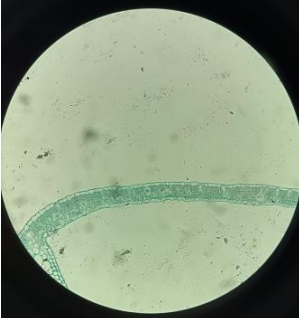


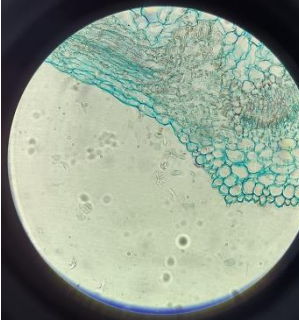
| | |
|---|---|
|  | <p>Root apical meristem</p> |
|  | <p>Shoot apical meristem</p> |
|  | <p>Water lily stem with aerenchyma</p> |
|  | <p>Potato cells with starch grains</p> |
|  | <p>Cactus cells with crystals</p> |



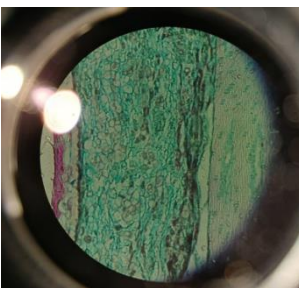
**Cross section of
the cotton leaf
vein**



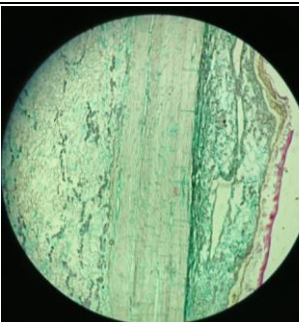
**Cross section of
the cotton leaf**



**Rosemary
glandular hairs**



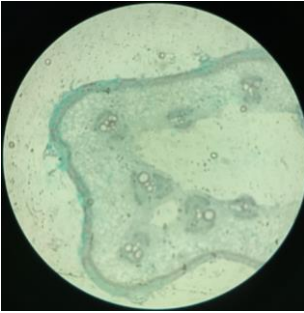
Pine stem



**Cross section of
a pine stem,
dead bark**



**Collenchyma in
the stem of
white dead-
nettle**



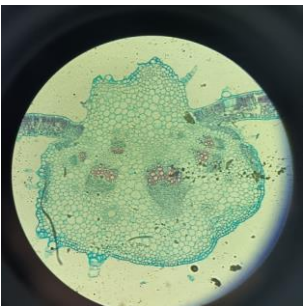
**Pumpkin stem
with vascular
bundles**



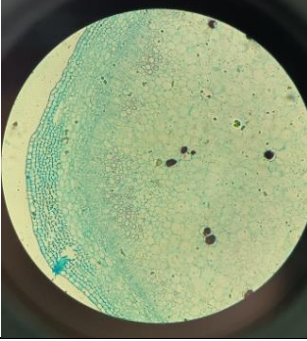
**Isolated
conducting
elements**



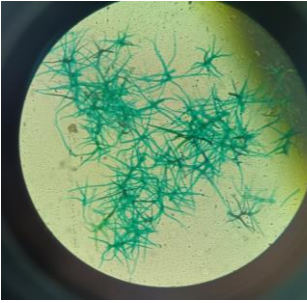
**Section through
the oleander
leaf vein**



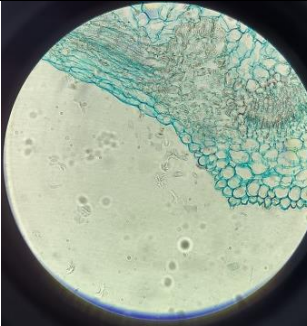
**Sunflower leaf
with trichomes**



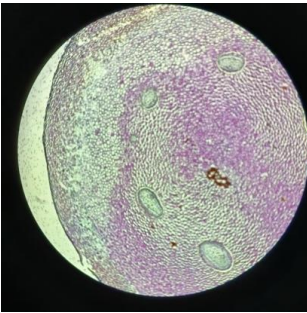
**Elder stem with
parenchyma cells
and cork**



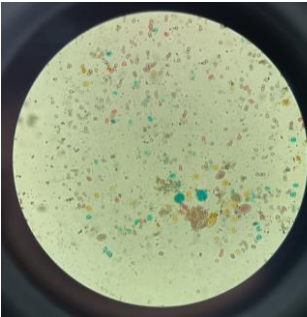
**Branched hairs
of the royal
cherry leaf**



**Rosemary
glandular hair**



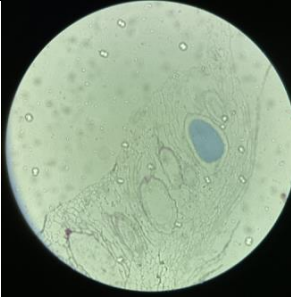
Fern rhizome



**Pollen of
various plants**



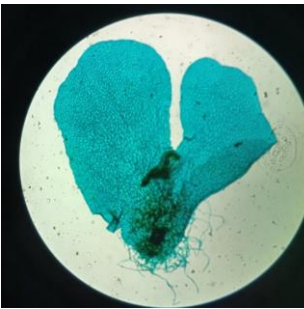
**Marchantia –
section through
an archegonium**



**Marchantia –
section through
an antheridium**



Moss antheridia



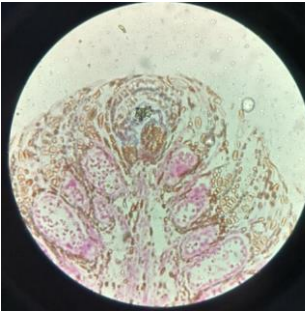
**Fern prothallus
with archegonia**



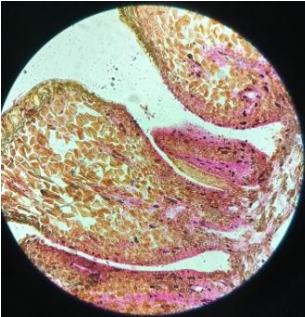
**Fern prothallus
with antheridia**



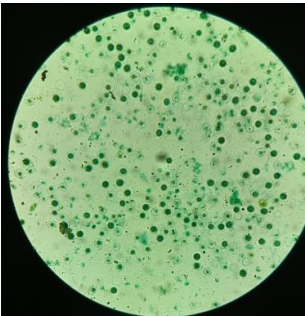
**Section through
a young pine
cone**



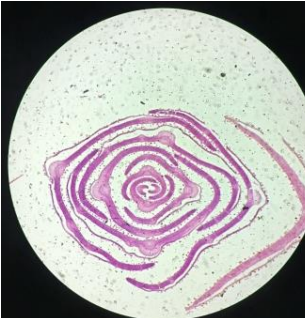
**Section through
a young pine
cone showing
meiosis**



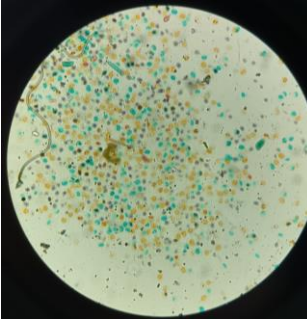
**Bract scales and
ovuliferous
scales of a
young pine cone**



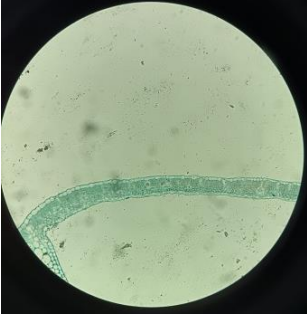
Horsetail spores



**Spruce shoot tip
(needle cross
section)**



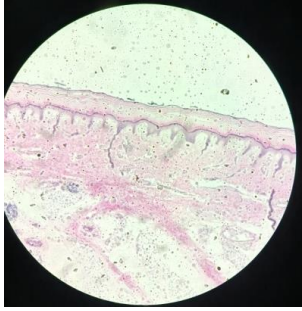
Pine pollen



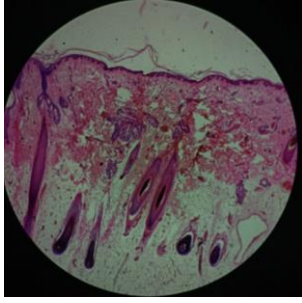
**Cross section of
a cotton leaf**



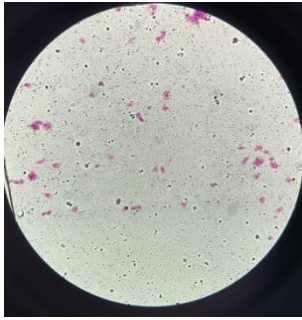
**Cross section of
a cotton leaf
(chlorenchyma
and epidermis)**



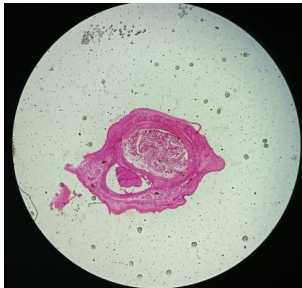
Skin with sweat glands



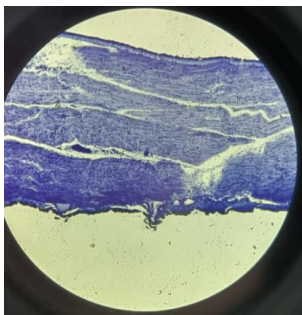
Human skin



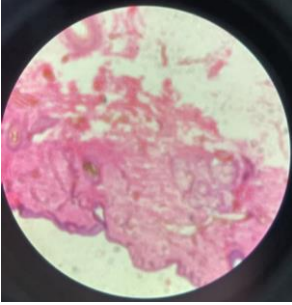
Epithelial cells of the



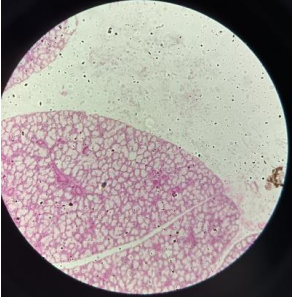
Fingernail



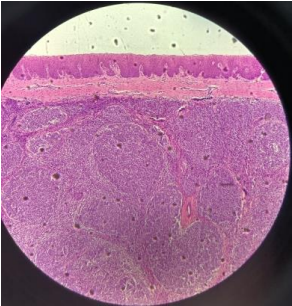
Skeletal muscle tissue (striated muscle tissue)



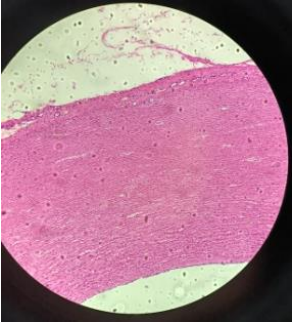
Cardiac muscle tissue



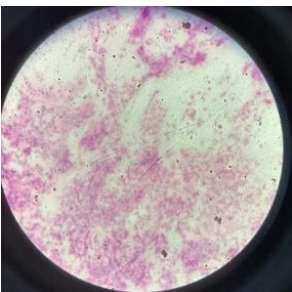
Human sublingual salivary gland



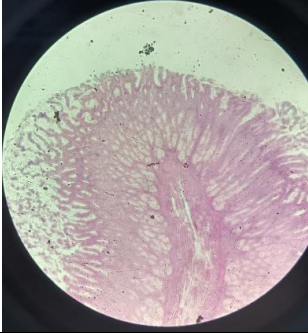
Tonsil with lymphoid nodules



Aortic wall



Human blood smear - erythrocytes



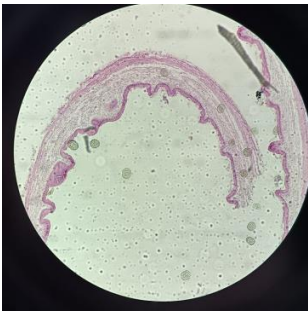
Intestinal wall



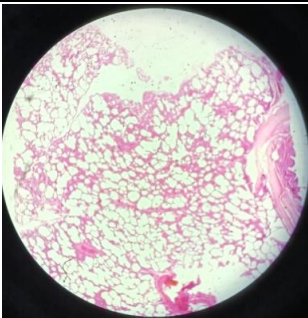
Small intestine wall



Appendix



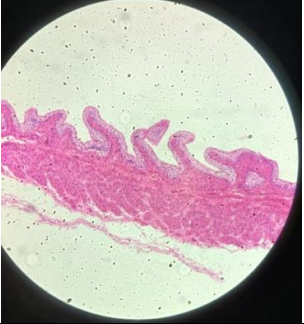
Gallbladder



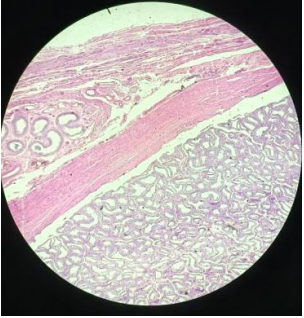
Human lung



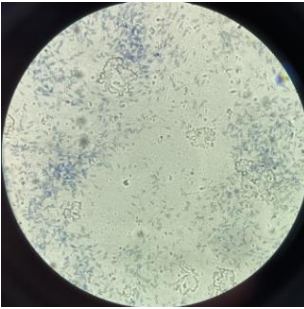
Human ureter



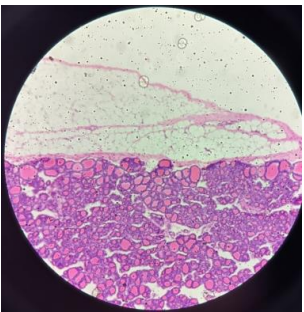
Urinary bladder



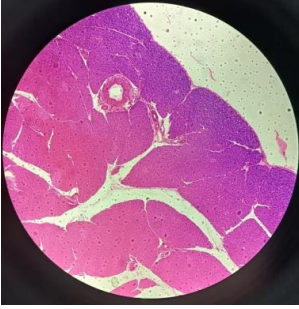
**Cross section of
a human testis**



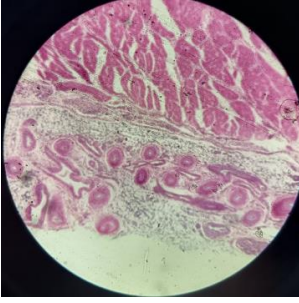
**Human sperm
cells**



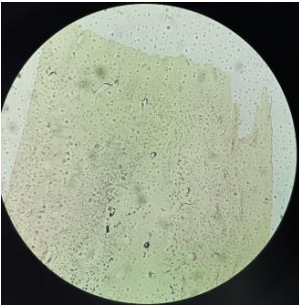
Thyroid gland



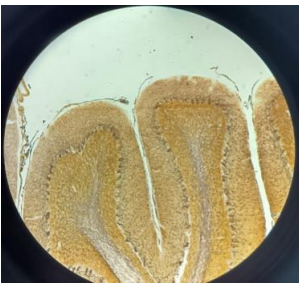
**Human
pancreas**



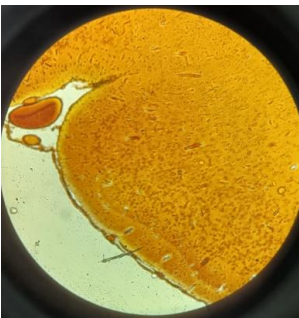
Cartilage



Bone



**Human
cerebellum**



**Human
cerebrum**























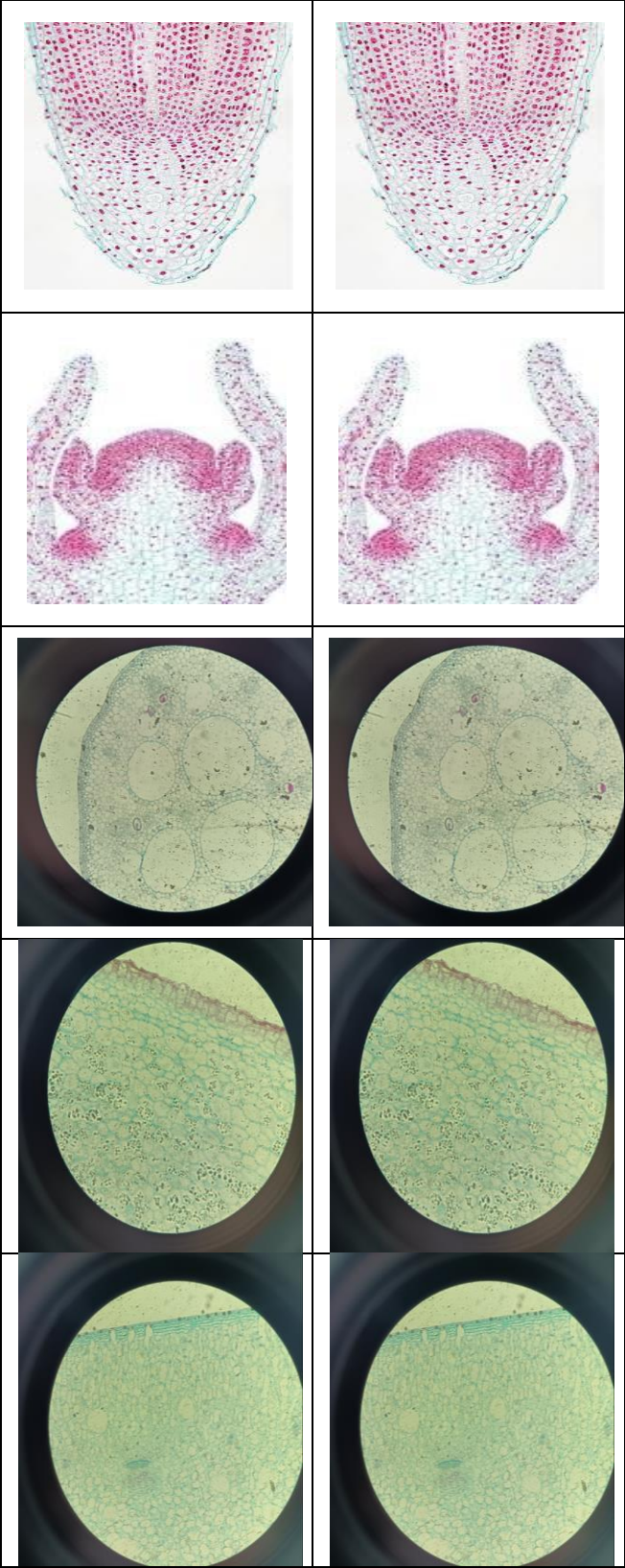


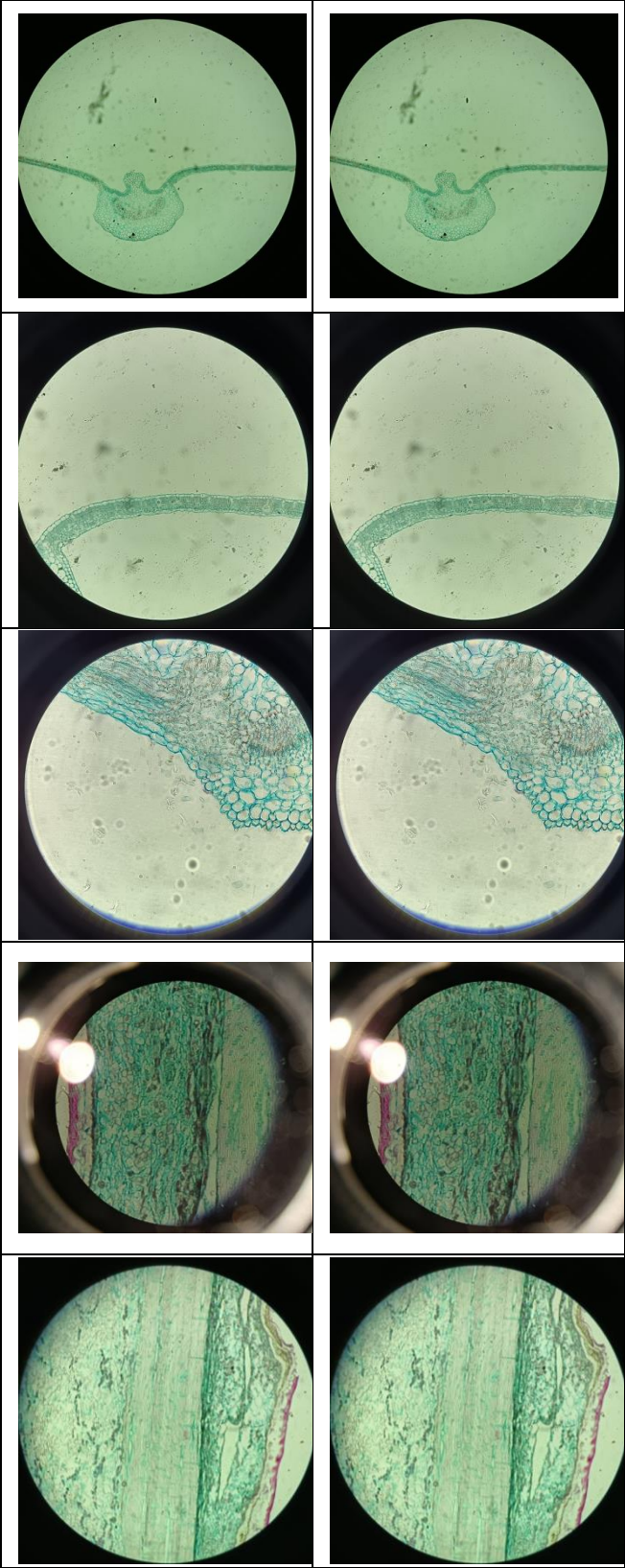


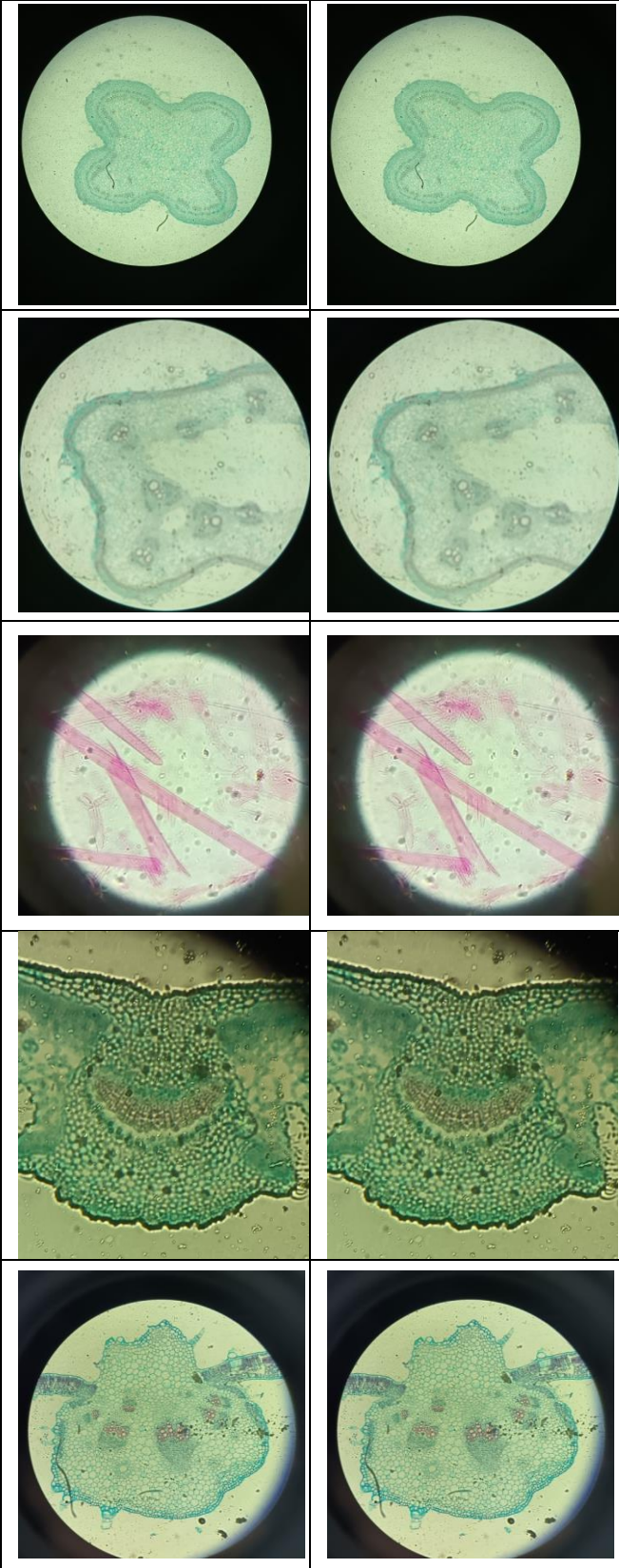


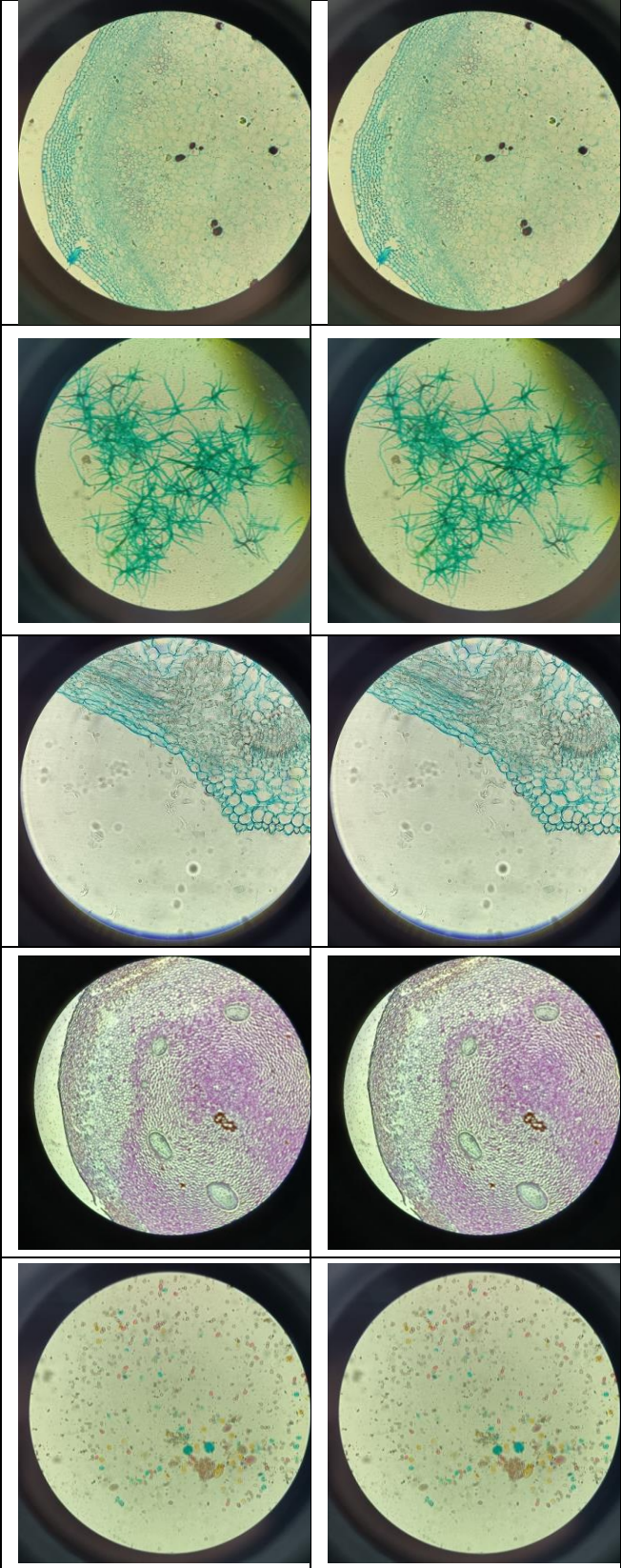
BASIC

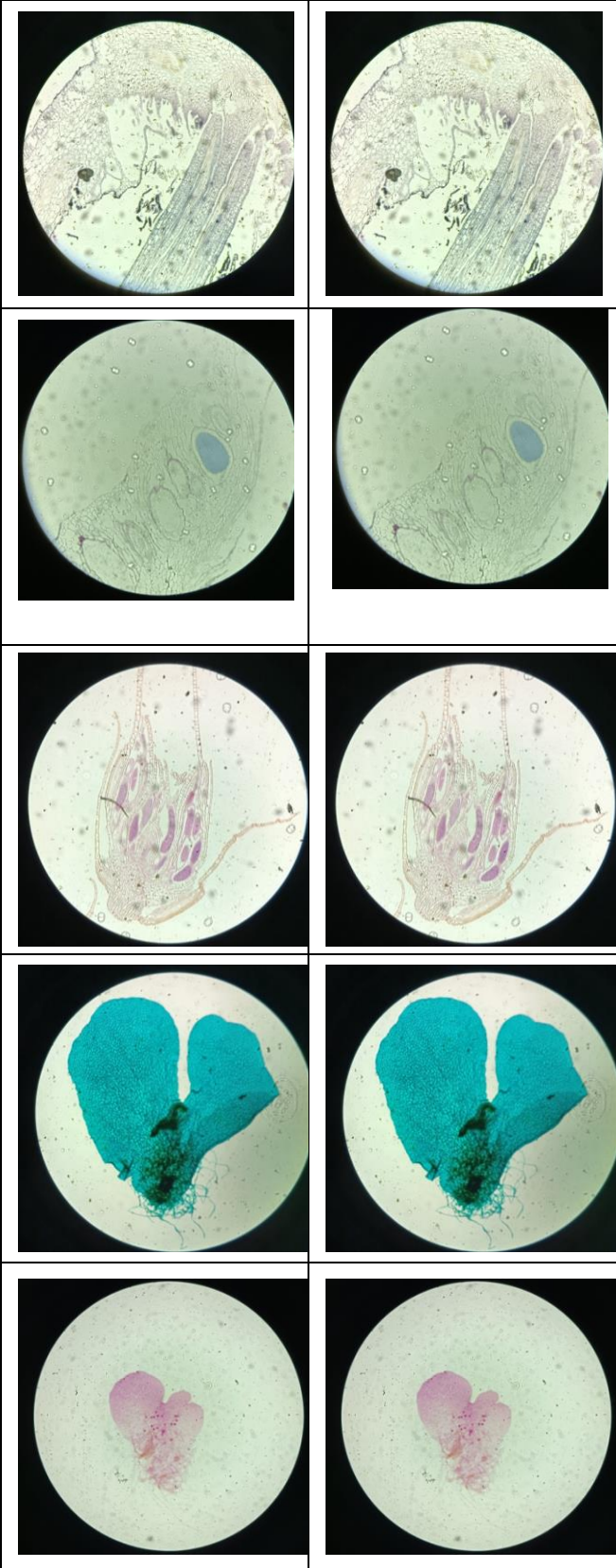
LEVEL

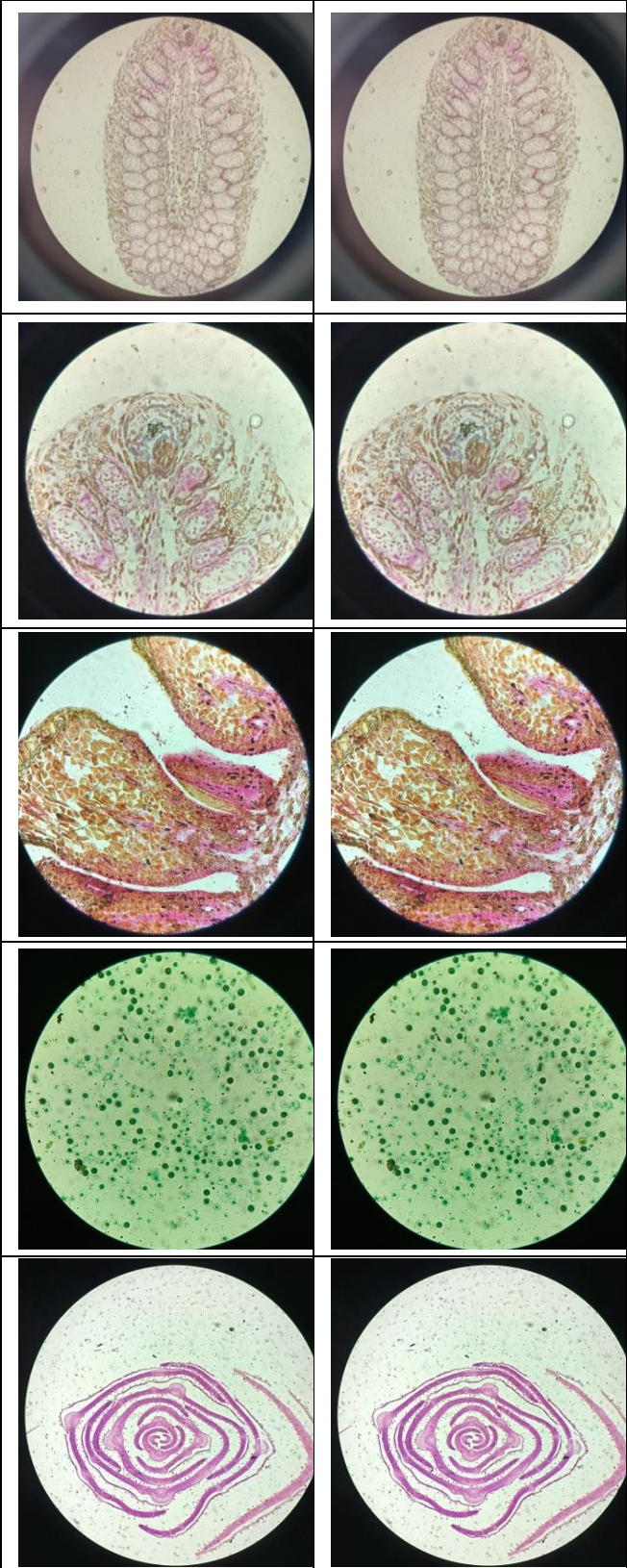












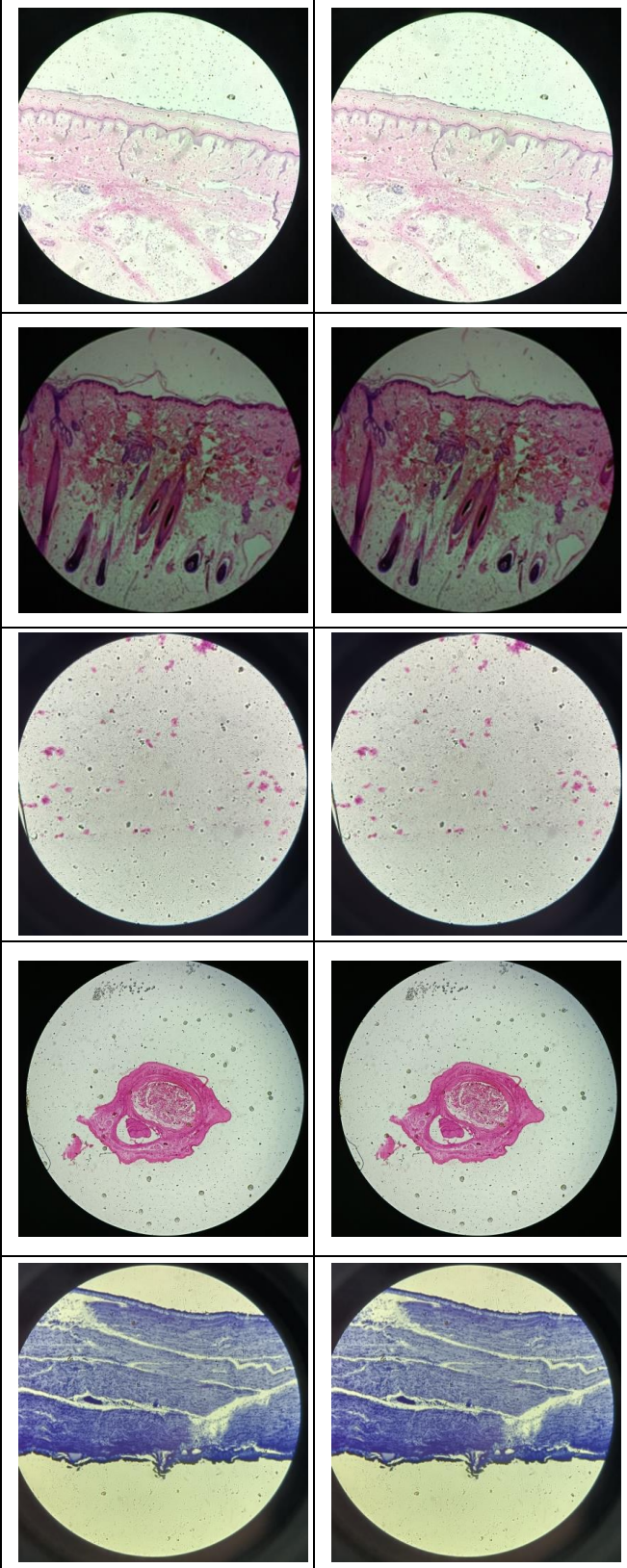


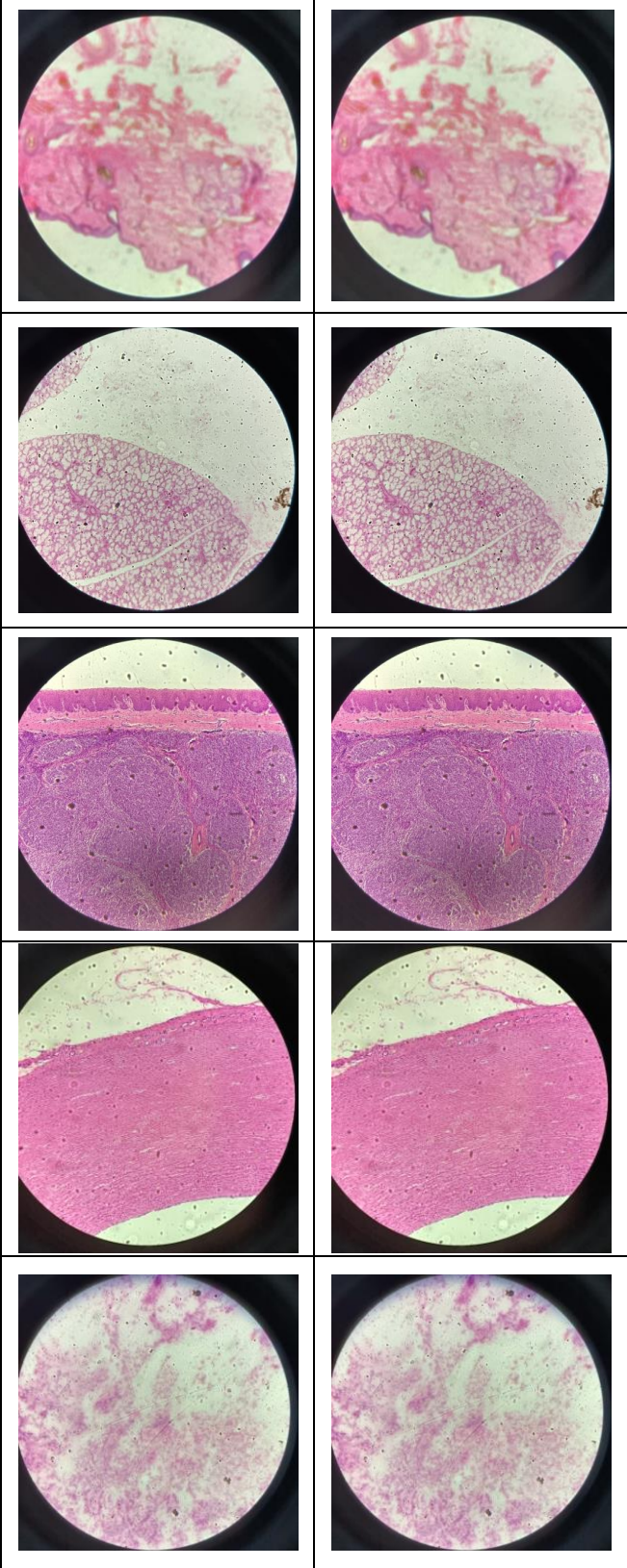


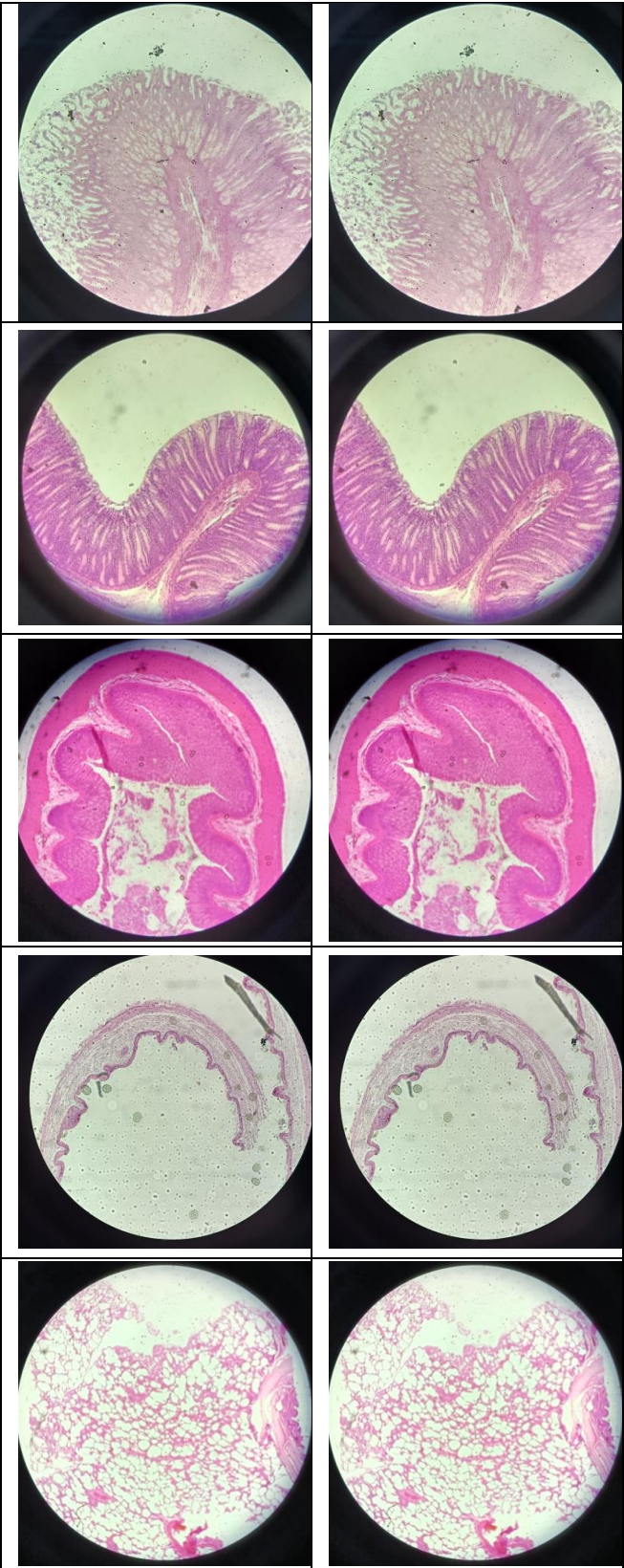


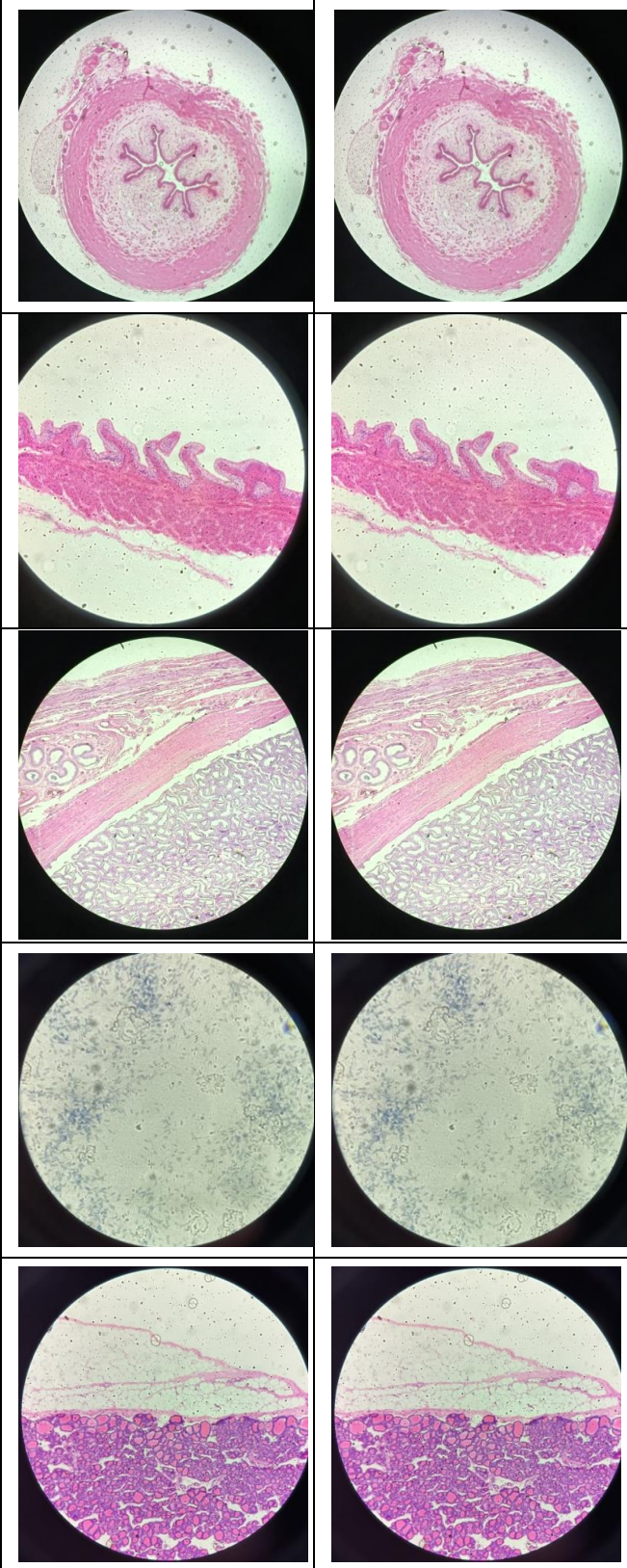


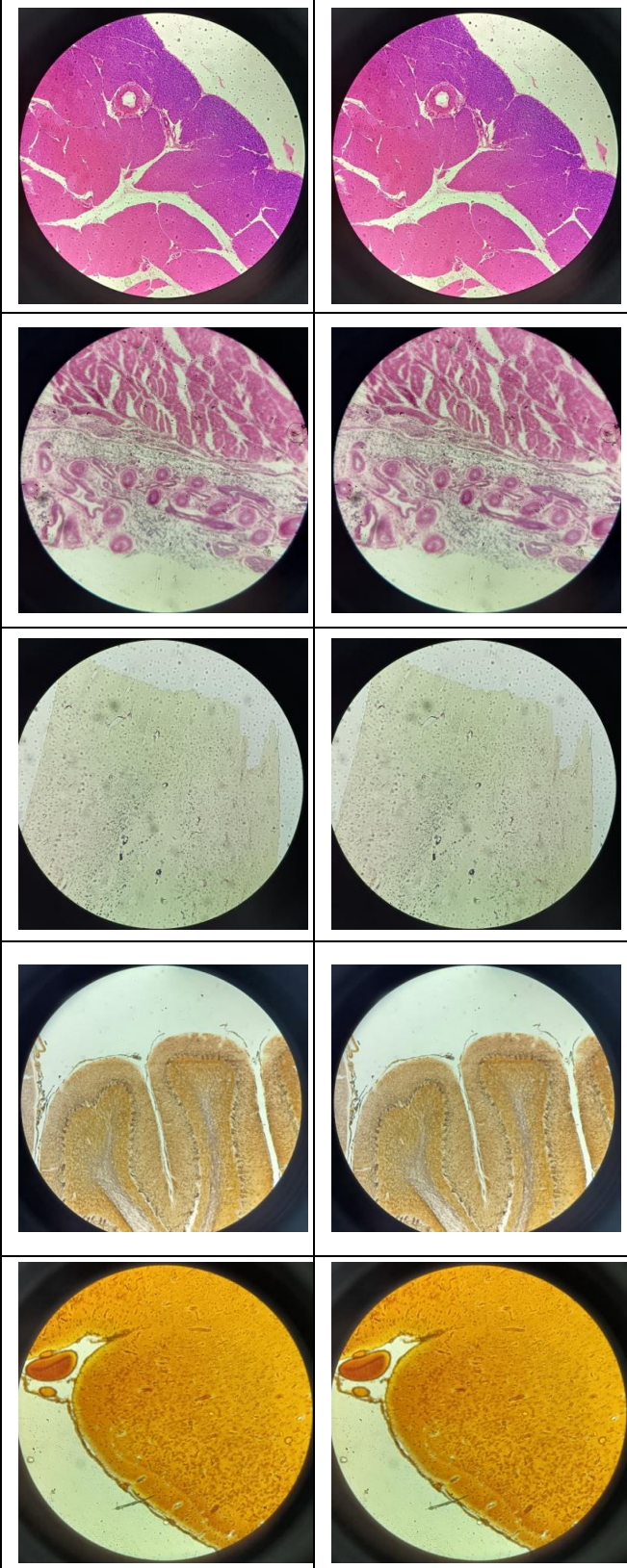










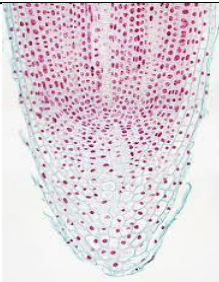

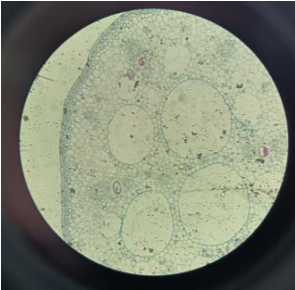
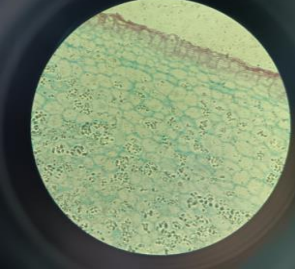
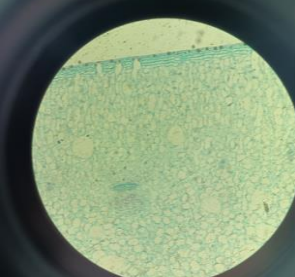






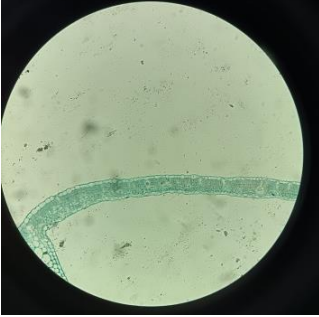




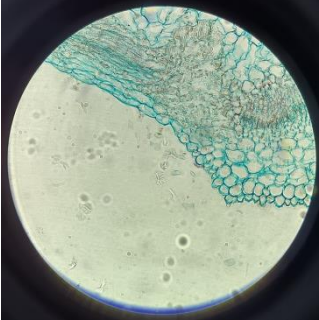
| Plant tissue specimen | CONCEPT |
|---|---|
|  | <p>Root apical meristem</p> |
|  | <p>Shoot apical meristem</p> |
|  | <p>Water lily stem with aerenchyma</p> |
|  | <p>Potato cells with starch grains</p> |
|  | <p>Cactus cells with crystals</p> |



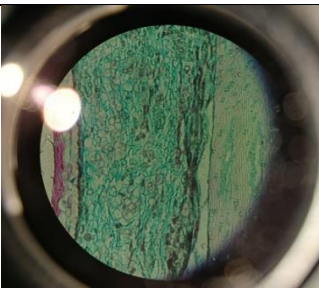
**Cross section
of the cotton
leaf vein**



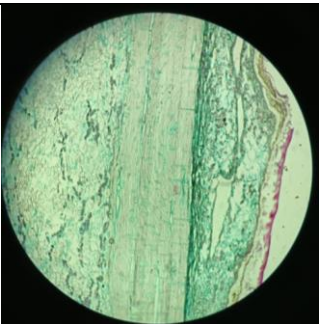
**Cross section
of the cotton
leaf**



**Rosemary
glandular
hairs**



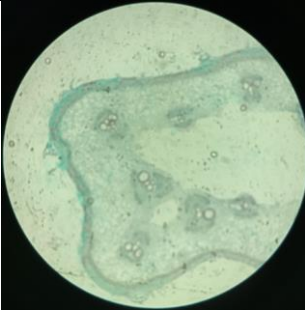
Pine stem



**Cross section
of a pine
stem, dead
bark**



**Collenchyma
in the stem
of white
dead-nettle**



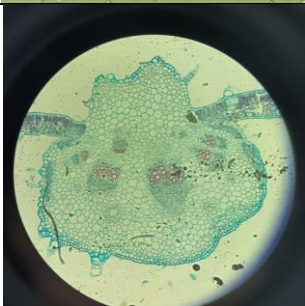
**Pumpkin
stem with
vascular
bundles**



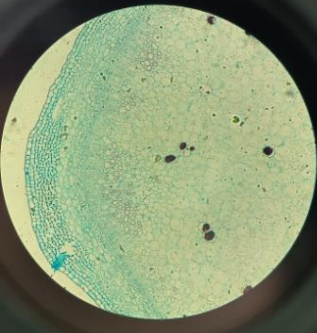
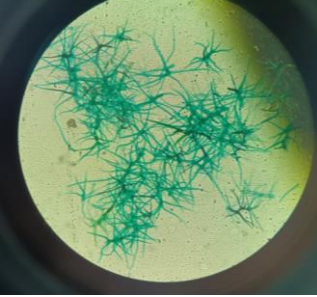
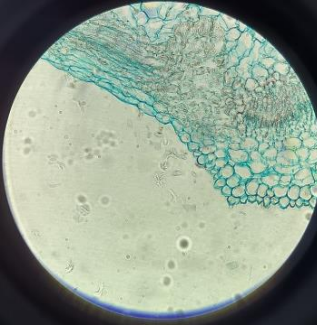
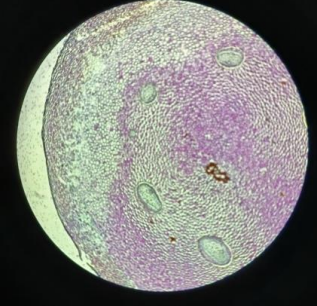
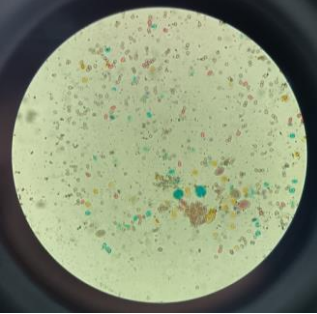
**Isolated
conducting
elements**

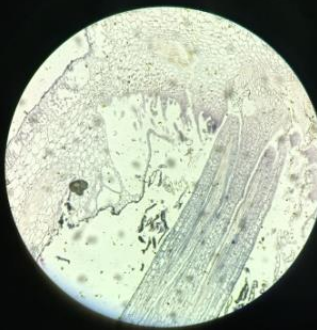


**Section
through the
oleander
leaf vein**

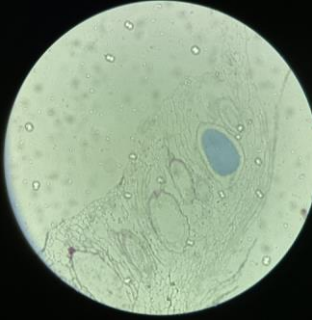


**Sunflower
leaf with
trichomes**

| | |
|---|---|
|  | <p>Elder stem with parenchyma cells and cork</p> |
|  | <p>Branched hairs of the royal cherry leaf</p> |
|  | <p>Rosemary glandular hair</p> |
|  | <p>Fern rhizome</p> |
|  | <p>Pollen of various plants</p> |



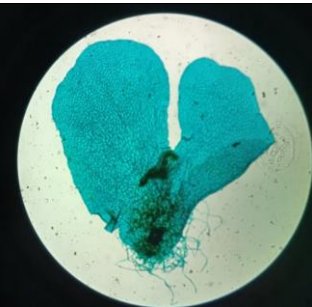
Marchantia
– section
through an
archegonium



Marchantia
– section
through an
antheridium



Moss
antheridia



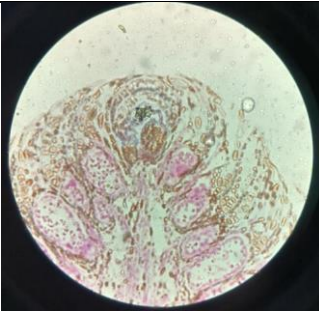
Fern
prothallus
with
archegonia



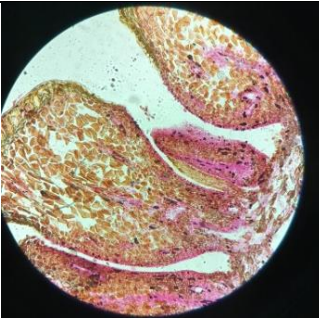
Fern
prothallus
with
antheridia



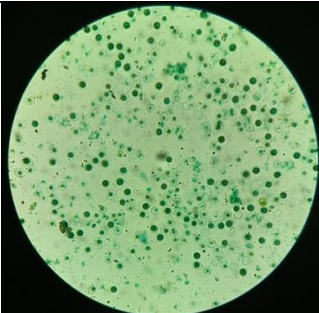
Section through a young pine cone



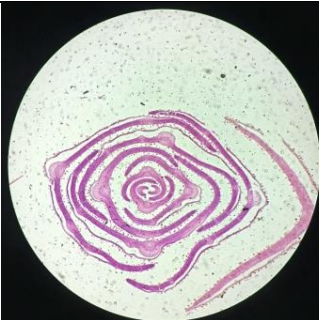
Section through a young pine cone showing meiosis



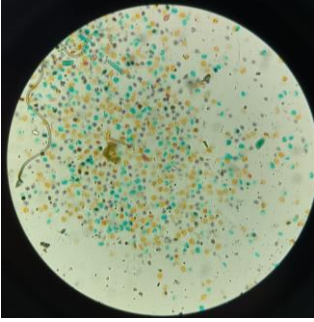
Bract scales and ovuliferous scales of a young pine cone



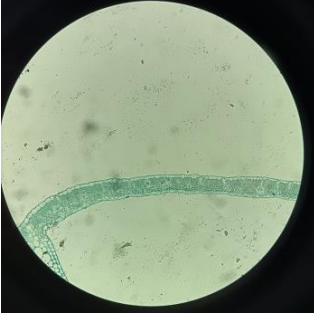
Horsetail spores



Spruce shoot tip (needle cross section)



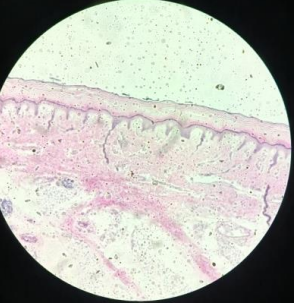
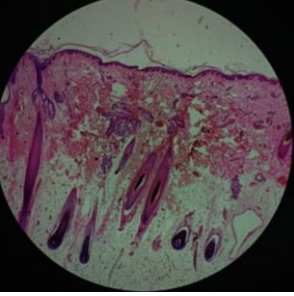
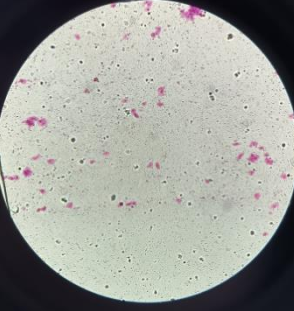

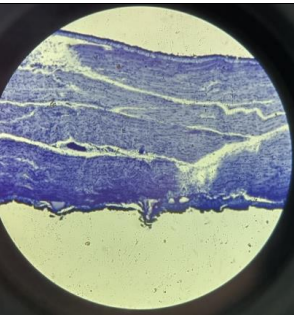
Pine pollen

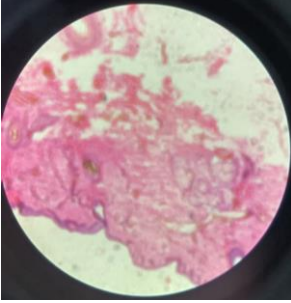


**Cross section
of a cotton
leaf**

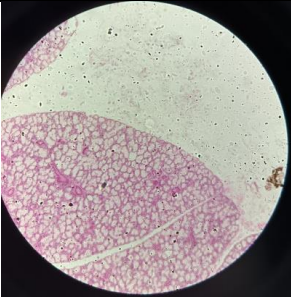


**Cross section
of a cotton
leaf
(chlorenchy
ma and
epidermis)**

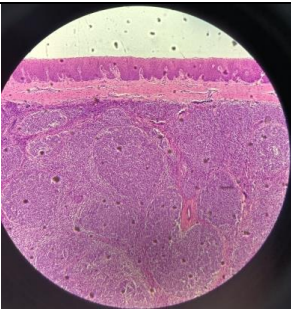
| Animal tissue specimens | Concept |
|---|---|
|  | <p>Skin with sweat glands</p> |
|  | <p>Human skin</p> |
|  | <p>Epithelial cells of the oral cavity</p> |
|  | <p>Fingernail</p> |
|  | <p>Skeletal muscle tissue (striated muscle tissue)</p> |



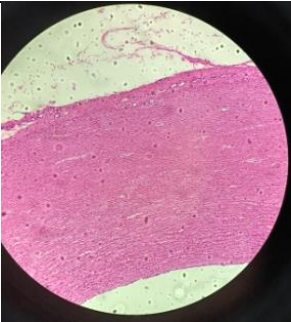
**Cardiac
muscle
tissue**



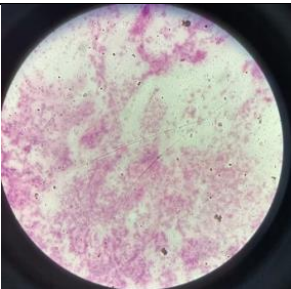
**Human
sublingual
salivary
gland**



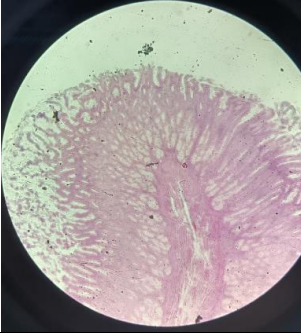
**Tonsil with
lymphoid
nodules**



Aortic wall



**Human
blood
smear -
erythrocyt
es**



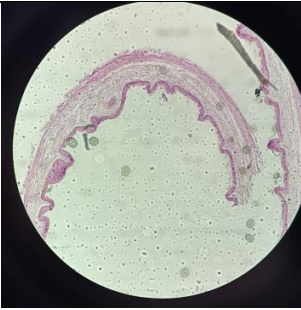
**Intestinal
wall**



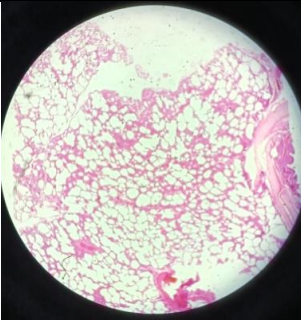
**Small
intestine
wall**



Appendix



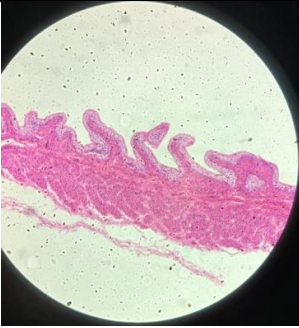
Gallbladder



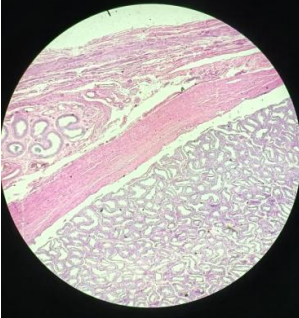
**Human
lung**



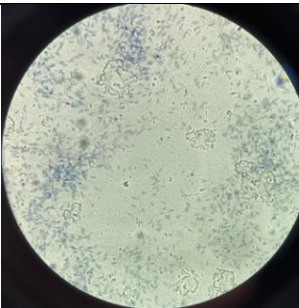
**Human
ureter**



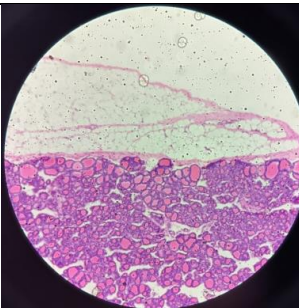
**Urinary
bladder**



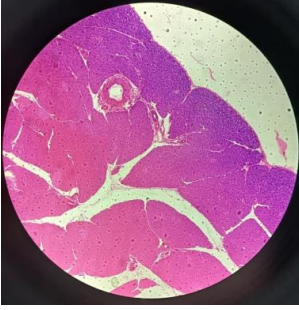
**Cross
section of a
human
testis**



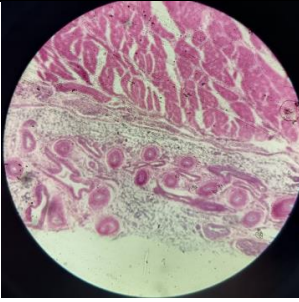
**Human
sperm cells**



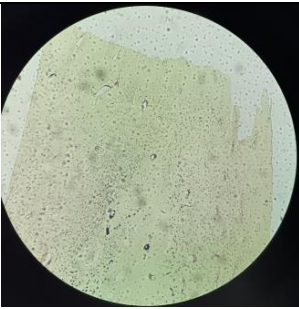
**Thyroid
gland**



**Human
pancreas**



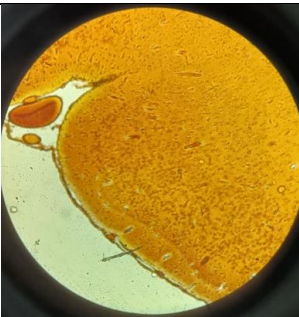
Cartilage



Bone



**Human
cerebellum**



**Human
cerebrum**